

INSTRUCTION MANUAL

EDBD-13 Drill Sharpener (240V) 3-13mm - 1/8"-1/2"



D070

HAFCO

INSTRUCTION MANUAL
EDBD-13 (D070)
Drill Sharpener (240V)
3-13mm - 1/8"-1/2"



HAFCO Drill sharpener restores blunt drill bits back to the original condition. The diamond wheel sharpens the drill bit to a sharp cutting edge. Quick and easy to use. A built-in drill bit setting guide ensures sharpening at the correct angle.

Read the instructions to reduce the risk of injury

Household voltage is 240volts. Before using this tool check that the power lead is not damaged. Do not use an extension cord



Gloves should be worn when ever handling drill bits. The edges are sharp and can cause injury



Sharpening drill bits creates sparks which could damage eyes so safety glasses should be worn. Earmuffs are optional.

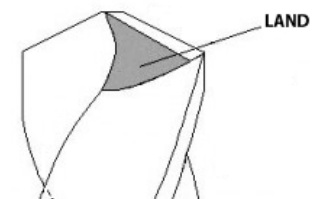


Before starting to use the Hafco drill sharpener make sure that the instruction sheet has been read and understood

HAFCO

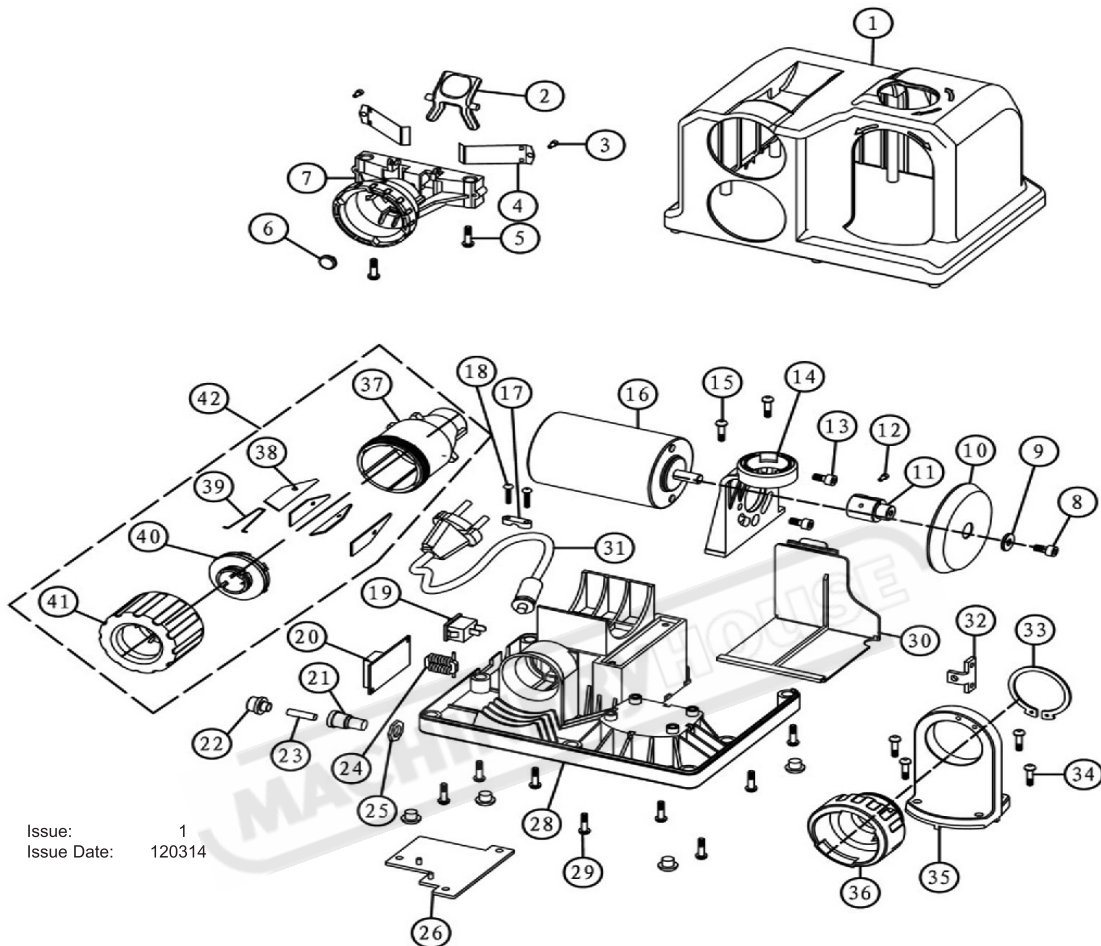
DIRECTIONS ON HOW TO USE

- 1 Check the drill shank to make sure that the drill will spin freely in the chuck. Remove any burrs and place the drill in the chuck. Close down the jaws until the drill is just gripped but still will spin in the chuck and allow the correct location.
- 2 Press the black button to expand the spring leaves which act as a setting gauge. Place the chuck with the drill into the setting gauge. Press the drill in until it is hard up against the rear stop & then release the black button. As you are releasing the black button gently rotate the drill to allow the spring leaves to locate on the flutes of the drill.
- 3 Try to rotate the drill to confirm that it is located in the correct position, if the drill can still rotate continue to turn the drill until the spring leaves locate on the flutes of the drill. Now tighten the chuck in a clockwise direction. Once tight press the black button to open the spring leaves & remove the chuck. The drill is set ready to grind.
- 4 Switch the motor on and then insert the chuck & pre-set drill, into the front grinding dock. The chuck will be located by the two sets of fingers on the outside of the chuck. Once located gently move the chuck in until the drill just touches the diamond wheel.
- 5 After the drill touches the wheel, rotate the chuck from left to right. Each time the wheel sparks out gently move the chuck in.
Note! The depth of each cut depends on how far you push the chuck in. It is recommended to take light cuts so as not to over heat the cutting edge. Continue the process until the drill can no longer be pushed in and the wheel stops grinding. Make sure that when the grinding stops that the chuck is pressed flat and hard up against the face of the rocking mechanism. This is important to insure accuracy. Once the operation is completed remove the chuck and rotate 180° and repeat the process.
Note! Accuracy depends on holding the drill chuck flat and hard up against the rocking mechanism on the last grind on each side of the drill.
- 6 This final step of reducing the land is optional. To reduce the land, after the drill has been sharpened using the front grinding hub, place the chuck into the top grinding dock with the chuck positioned in the most clockwise position. Once located gradually rotate anti clockwise until the chuck can go no further and the grinding has stopped, Remove the chuck and rotate 180° and repeat the process. (Reducing the land results in less pressure needed when drilling a hole)





SPARE PARTS LIST



Issue: 1
Issue Date: 120314

ITEM	PART NO	DESCRIPTION	ITEM	PART NO	DESCRIPTION
1	SMS2008.01	TOP HOUSING	22	SMS2008.22	NUT FOR FUSE
2	SMS2008.02	BUTTON	23	SMS2008.23	FUSE
3	SMS2008.03	SCREW	24	SMS2008.24	INDUCTANCE
4	SMS2008.04	SPRING PLATE	25	SMS2008.25	LOCKNUT
5	SMS2008.05	SCREW	26	SMS2008.26	COVER
6	SMS2008.06	TERMINAL	27	SMS2008.27	CUSHION
7	SMS2008.07	FIXING SHELF	28	SMS2008.28	BASE
8	SMS2008.08	SCREW	29	SMS2008.29	SCREW
9	SMS2008.09	WASHER	30	SMS2008.30	DUST CAP
10	SMS2008.10	GRINDING WHEEL	31	SMS2008.31	POWER CORD
11	SMS2008.11	CONNECTOR	32	SMS2008.32	CONNECTOR BOARD
12	SMS2008.12	SCREW	33	SMS2008.33	CLAMP SPRING
13	SMS2008.13	SCREW	34	SMS2008.34	SCREW
14	SMS2008.14	POSITIONER	35	SMS2008.35	BRACKET
15	SMS2008.15	SCREW	36	SMS2008.36	STAND SUPPORT
16	SMS2008.16	MOTOR	37	SMS2008.37	POSITIONER FOR BLADE
17	SMS2008.17	WIRE RETAINER	38	SMS2008.38	BLADE HOLDER
18	SMS2008.18	SCREW	39	SMS2008.39	STEEL SPRING
19	SMS2008.19	SWITCH	40	SMS2008.40	TRANSITION TUBE
20	SMS2008.20	PCB	41	SMS2008.41	LOCKNUT
21	SMS2008.21	FUSE BLOCK	42	SMS2008.42	HOLD ACCESSORY (inc 35,36,37,38,39)